

Compact Ejectors

Compact Vacuum Ejectors M-ECO

Suction capacity: 86 L/min to 168 L/min

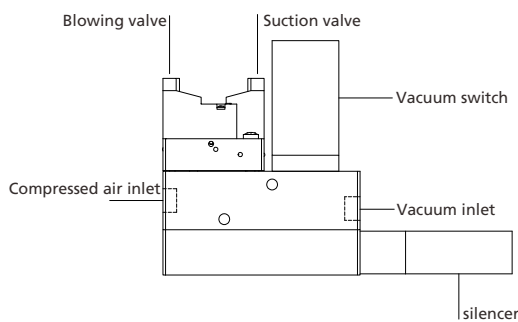
Compact Vacuum Ejectors M-ECO



Introduction and application

- ◆ Vacuum interface thread is G1/8 or G3/8
- ◆ Available in a variety of configurations to customize to your specific needs. The Si vacuum tube provides high vacuum flow and the Xi vacuum tube provides high vacuum.

System Design Compact Vacuum Ejectors M-ECO



Design

- ◆ Body made of aluminum
- ◆ Optional suction valve normally open (NO) or normally closed (NC) form
- ◆ Built-in normally closed (NC) blow valve, silencer and check valve
- ◆ Alternate component: digital vacuum switch

Ordering Data Compact Vacuum Ejectors M-ECO

Type	Vacuum tube type	System monitoring	Ordering Data
M-ECO-10 NC	XI10		90.05.01.00195
M-ECO-25 NC	XI40		90.05.01.00196
M-ECO-10 NC PNP	XI10	PNP	90.05.01.00197
M-ECO-25 NC PNP	XI40	PNP	90.05.01.00198
M-ECO-10 NC NPN	XI10	NPN	90.05.01.00201
M-ECO-25 NC NPN	XI40	NPN	90.05.01.00202
M-ECO-10 NO	XI10		90.05.01.00203
M-ECO-25 NO	XI40		90.05.01.00204
M-ECO-10 NO PNP	XI10	PNP	90.05.01.00205
M-ECO-25 NO PNP	XI40	PNP	90.05.01.00206
M-ECO-10 NO NPN	XI10	NPN	90.05.01.00207
M-ECO-25 NO NPN	XI40	NPN	90.05.01.00208

Note: Initial state of the blow valve NC normally closed NO normally open

Combined Suction Cups
Vacuum Suction Cups
Composite Suction Cups
Special Grippers
Vacuum Gripping Systems
Mounting Elements
Vacuum Generators
Valve Technology
Switch And Monitoring
Vacuum Filters

Compact Ejectors

Compact Vacuum Ejectors M-ECO

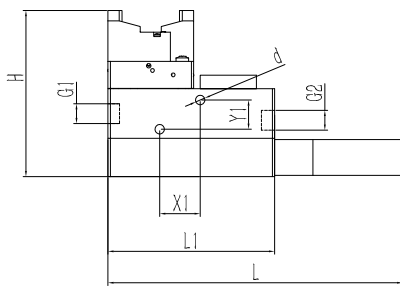
Suction capacity: 86 L/min to 168 L/min

Technical Data Compact Vacuum Ejectors M-ECO

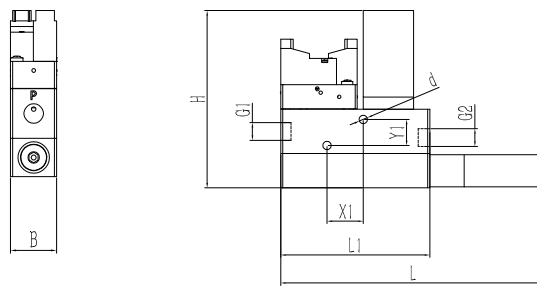
Type	Maximum vacuum [%]	Maximum suction force [l/min]	Air consumption [l/min]	Operating pressure [bar]	weight [g]	Operating temperature [°C]
M-ECO-10	88	86	36	5	260	-10...80
M-ECO-25	91	168	120	5	590	-10...80

Design Data Compact Vacuum Ejectors M-ECO

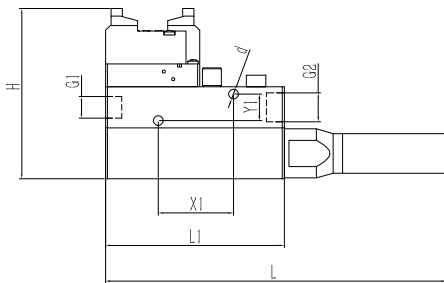
M-ECO-10 NC/NO



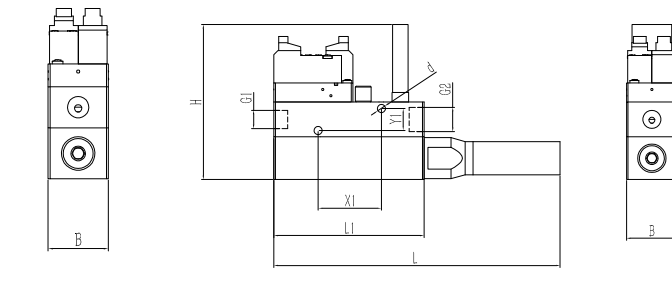
M-ECO-10 NC/NO PNP/NPN



M-ECO-25 NC/NO



M-ECO-25 NC/NO PNP/NPN



Type	Dimensions [mm]									
	B	d	G1	G2	H	L	L1	X1	Y1	
M-ECO-10 NC/NO	20.6	4.2	G1/8-F	G1/8-F	73.6	131	74	18	13	
M-ECO-25 NC/NO	32	5.2	G1/4-F	G3/8-F	90.5	181	95	40	14	
M-ECO-10 NC/NO PNP	20.6	4.2	G1/8-F	G1/8-F	88	131	74	18	13	
M-ECO-25 NC/NO PNP	32	5.2	G1/4-F	G3/8-F	98	181	95	40	14	
M-ECO-10 NC/NO NPN	20.6	4.2	G1/8-F	G1/8-F	88	131	74	18	13	
M-ECO-25 NC/NO NPN	32	5.2	G1/4-F	G3/8-F	98	181	95	40	14	

- Combined Suction Cups
- Vacuum Suction Cups
- Composite Suction Cups
- Special Grippers
- Vacuum Gripping Systems
- Mounting Elements
- Vacuum Generators
- Valve Technology
- Switch And Monitoring
- Vacuum Filters

Compact Ejectors



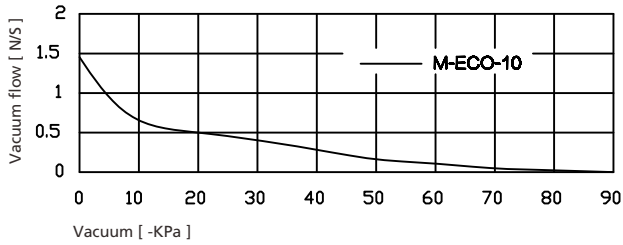
Compact Vacuum Ejectors M-ECO

Suction capacity: 86 L/min to 168 L/min

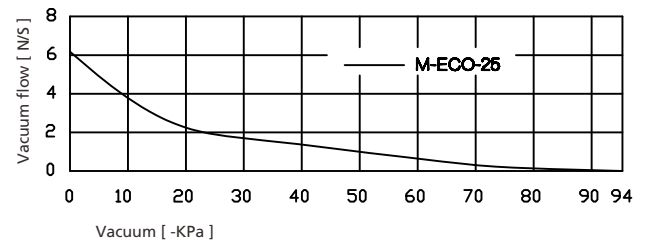


Performance curve Compact Vacuum Ejectors M-ECO

Vacuum flow corresponding to different vacuum degrees at 5 bar working pressure



Vacuum flow corresponding to different vacuum degrees at 5 bar working pressure



Combined Suction Cups

Vacuum Suction Cups

Composite Suction Cups

Special Grippers

Vacuum Gripping Systems

Mounting Elements

Vacuum Generators

Valve Technology

Switch And Monitoring

Vacuum Filters